



JAMES BARONE RACING
AFTERMARKET PARTS AND ACCESSORIES

JBR 2010 – 2013 MAZDASPEED TR6 Intercooler Mounting Bracket
Installation Instructions

Tooling:

- Jack, Jack Stands, Ramps or a lift
- Ratchet wrench
- 6" socket extension
- 10mm, 13mm sockets
- Philips head screw driver

Parts List

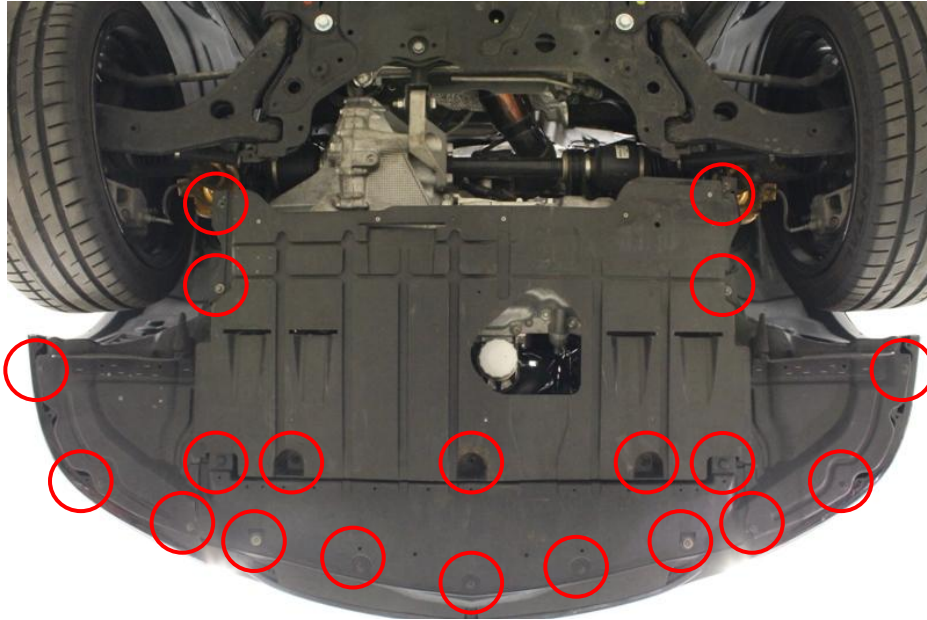
- 2 - 6mm x 35mm hex bolts
- 2 - 6mm flat washers
- 2 - 6mm lock washers
- 2 - 8mm x 25mm hex bolts
- 2 - 8mm lock washers
- 2 - 2 nylon spacers
- 2 - 2 aluminum spacers
- 1 - Driver's Side Core Mounting Bracket
- 1 - Passenger Side Core Mounting Bracket

1. Begin by parking on a smooth level surface with the emergency brake engaged. Jack up the front of the vehicle and position jack stands underneath both sides.



**Refer to your vehicle's owner's manual for proper jack placement and supporting procedures.
Never get under a vehicle without the proper support in place.**

2. Remove the belly pan and lower radiator cover using a 10mm socket and a philips head screw driver.



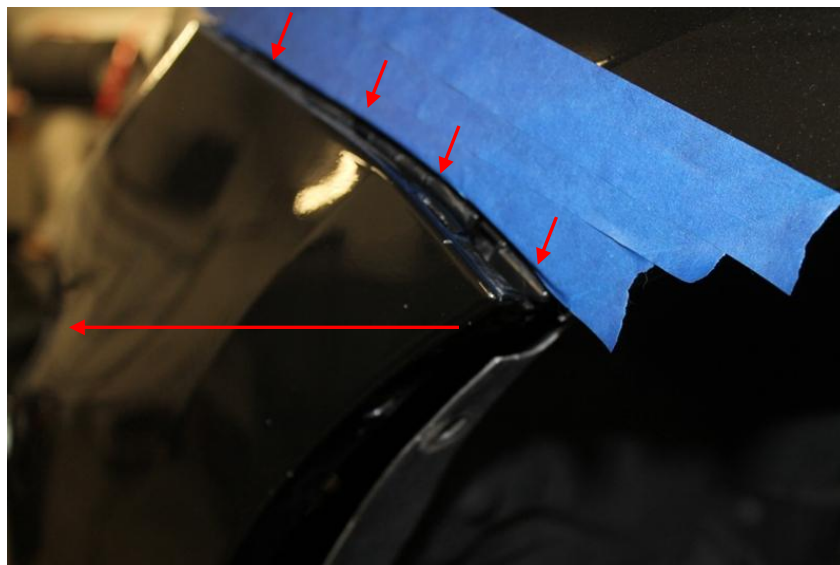
3. Remove the 3 push pins and 1 philips head screw on both the driver's side and passenger side fender liner.



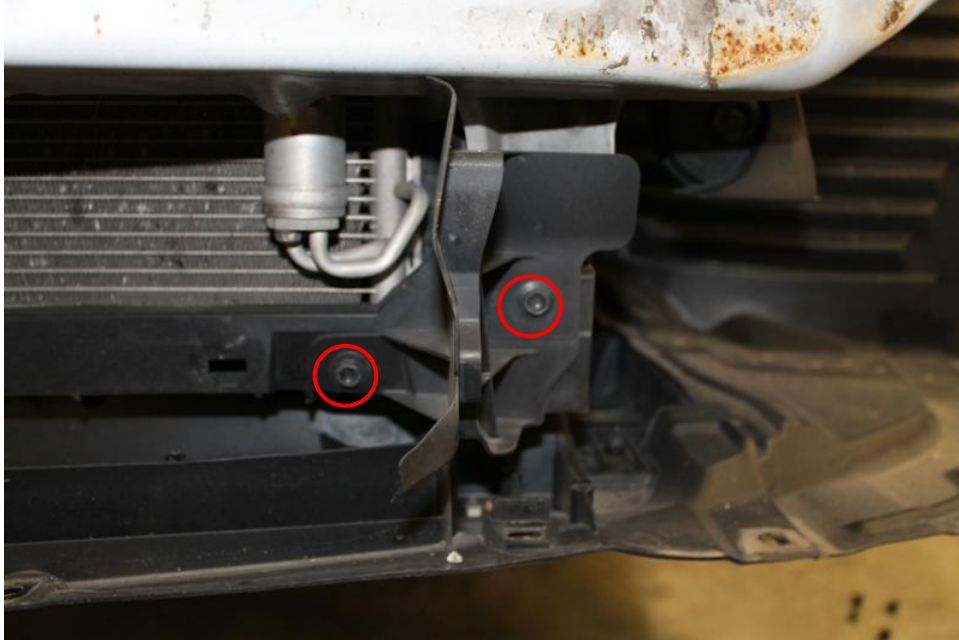
4. Remove two philips head bolts and all push pins securing the top portion of the bumper cover.



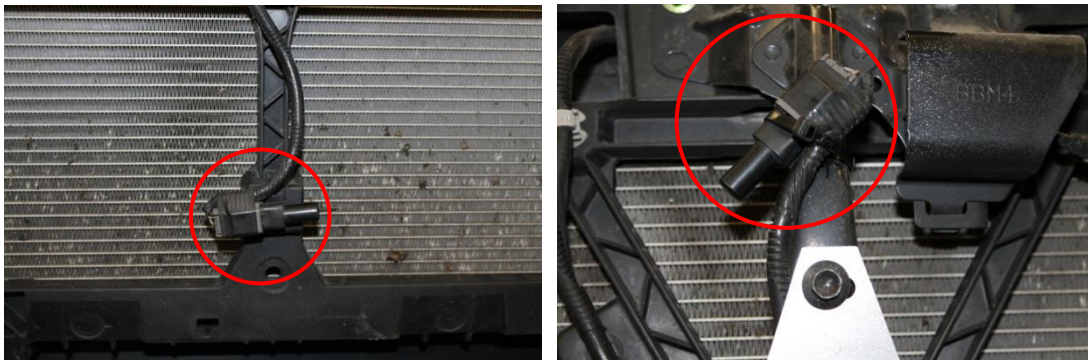
5. Unsnap the bumper cover out from under the fender on each side of the car. Once each side of the bumper is detached from the fender, remove the bumper slowly by pulling forward. Rotate the bumper cover towards the passenger side of the car and carefully lay it out of the way on a blanket.
 - Removing the wiring harness that runs along the front of the bumper cover to the fog lights makes storing the cover while working much easier. Painters tape will protect the fender during removal and reinstallation.



- Using a 10mm socket remove the 2 bolts securing the radiator ducting on both sides of the radiator.



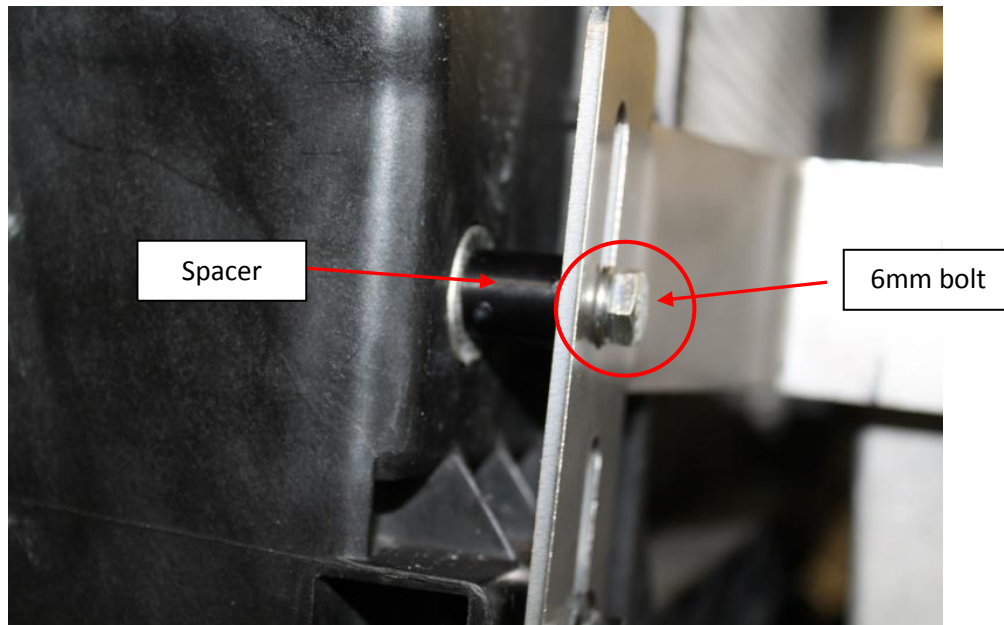
- Remove the OEM Ambient temperature sensor from the lower portion of the radiator support and relocate it to the hood latch. Re-secure it with a zip tie or electrical tape.



- Using two of the 10mm bolts removed from the radiator ducting in step six, mount the driver's side and passenger side brackets as illustrated below; do not tighten.

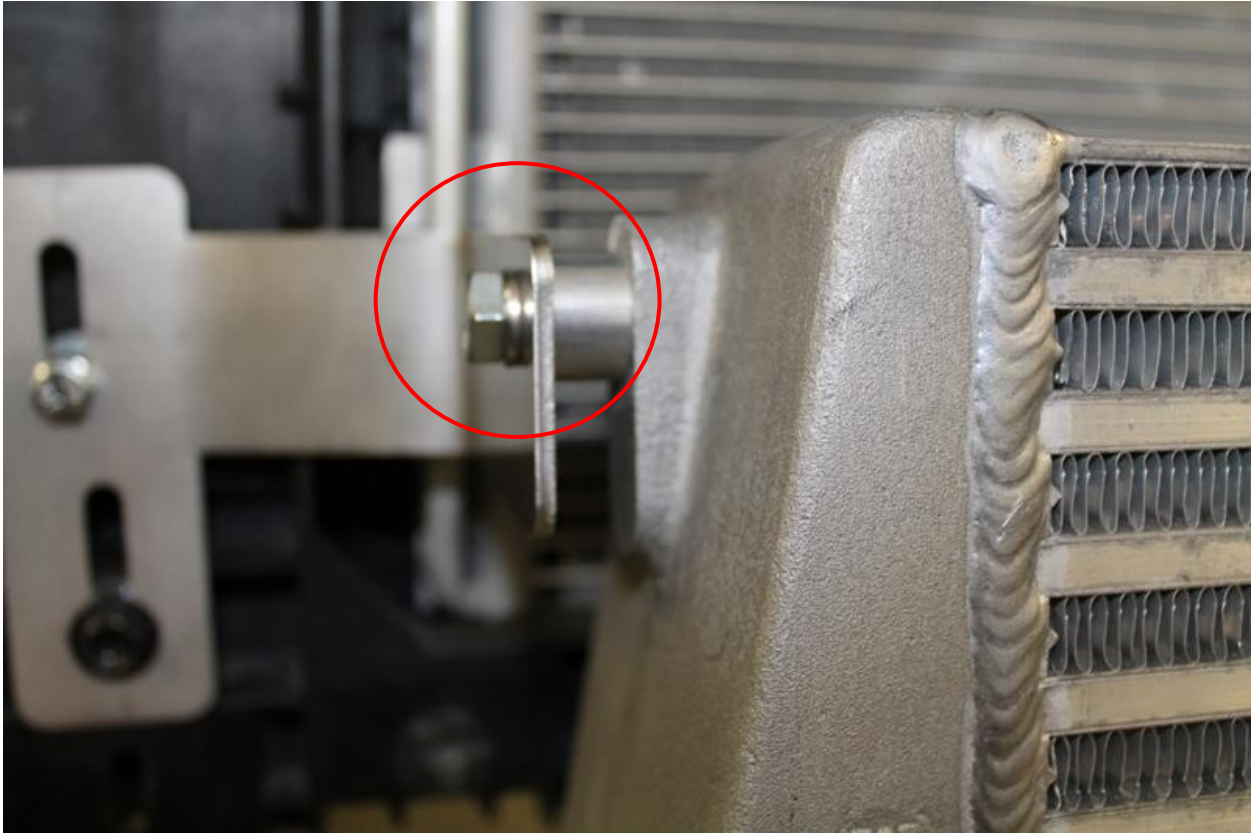


- Place the nylon spacer behind the bracket Use the 6mm x 1.0 x 35mm bolt, lock washer and flat washer.



- Using a 10mm socket tighten both bolts installed in step 8 and 9.

11. Using the 8mm x 25mm bolt, lock washer and aluminum spacer, mount your TR6 Intercooler core as shown below. Tighten with a 13mm socket.



SHIPPING

All orders are carefully inspected and packaged prior to shipment. The recipient must inspect all shipments for damage and report any damage to the carrier and JAMES BARONE RACING immediately. JAMES BARONE RACING is not responsible for damage that occurs during shipping.

RETURNS:

All sales are final. JAMES BARONE RACING will only accept returns in the event of a manufacturer's defect. Defective items will be exchanged for the identical item or repaired at our discretion. Return shipping costs are the responsibility of the purchaser. An RMA # (Return to Manufacturer Authorization Number) must accompany all returns. In rare cases when a return is accepted, a 15% restocking fee will be deducted from the refund or credit. Shipping charges are non-refundable. No returns or exchanges will be accepted after 30 days.

DISCLAIMERS:

Failure to carefully follow the installation instructions for your JAMES BARONE RACING product could result in significant property damage, personal injury, injury to others or even death. Please take the time to read and thoroughly understand the instructions prior to installation. The instructions are as accurate as possible and may vary slightly from model year to model year. Professional installation is recommended.

Neither JAMES BARONE RACING nor any of its employees, officers, directors, or shareholders will accept responsibility for improper use or installation of our products. JAMES BARONE RACING is not responsible for the misuse, incorrect installation, or failure of any product we sell. Under no circumstances, including but not limited to negligence, will JAMES BARONE RACING be liable for special or consequential damages that result from the use or inability to use our products. JAMES BARONE RACING does not assume responsibility for any damage to the user, driver, passenger or vehicle resulting from the operation of a JAMES BARONE RACING product. PLEASE DRIVE RESPONSIBLY.

WARRANTY:

All JAMES BARONE RACING products carry a lifetime warranty to the original purchaser. Warranty is non-transferable. Supporting components, manufactured by companies other than James Barone Racing, carry the manufacturer's warranty. Warranty does not cover damage to coatings caused by exposure to the elements. Warranty does not cover damage or failure caused by abuse, misuse, faulty installation or repairs not conducted by JAMES BARONE RACING. JAMES BARONE RACING is not liable for consequential damages arising from the use of our products or any indirect damages resulting in the loss of property, revenue or costs for towing, removal, installation, or re-installation. To receive warranty service you must contact JAMES BARONE RACING to receive an RMA # (Return to Manufacturer Authorization Number) at which time you will be provided with instructions for returning the faulty product

CONTACT:

If you have questions or problems, e-mail us at jamesbaroneracing@gmail.com. Posting questions or problems in the forums or other social media outlets will only delay you from getting the correct answer or personalized attention from us.