



**James Barone Racing**  
**Custom Fabrication of Aftermarket Parts and Accessories**

**JBR 5mm Wheel Spacer Installation Instructions**

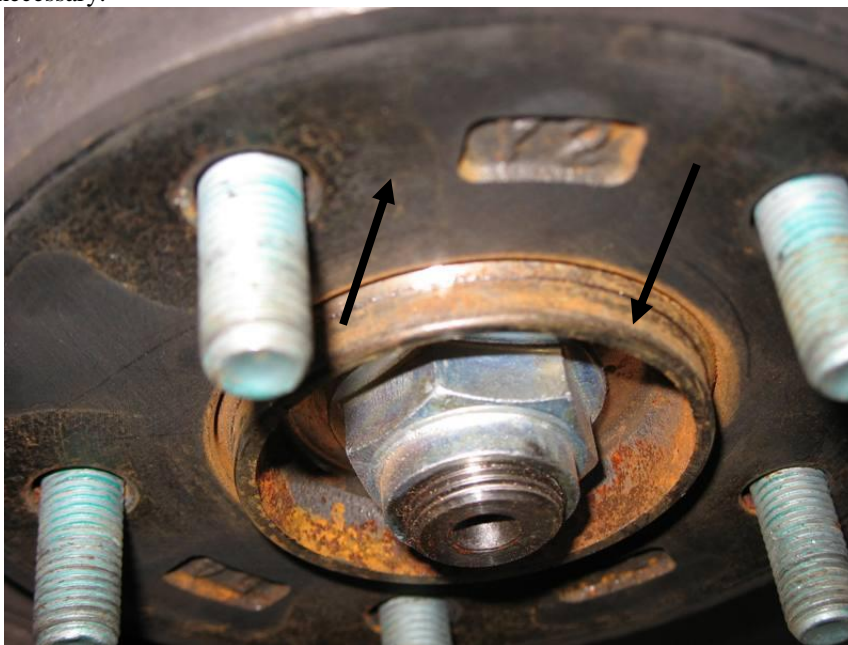
**FAILURE TO CORRECTLY INSTALL THIS PRODUCT WILL  
RESULT IN THE LOSS OF WHEEL(S) WHILE DRIVING**

1. Begin by parking on a smooth level surface with the emergency brake engaged. Jack up the front right side of the vehicle and position jack stand underneath for safety and support.



**Refer to you vehicles owner's manual for proper jack placement and supporting procedures. Never get under a vehicle without the proper support in place.**

2. Remove the wheel from the vehicle and inspect the back side where it mates to the hub/rotor for any signs of corrosion. Remove with sand paper, wire brush or wire wheel if necessary.
3. Inspect the hub/rotor for any signs of corrosion. Remove with sand paper, wire brush or wire wheel if necessary.



4. Place the wheel spacer on the hub.



5. Reinstall the wheel and hand tighten the lug nuts as much as possible. Lower the vehicle.
6. Torque the lug nuts to 100 ft/lbs following the sequence below.



7. Repeat steps 1 -6 for the remaining 3 wheels.

### **IMPORTANT NOTICE OF WARNING**

**Prior to moving the vehicle, check for any potential interference with other parts.**

**Check and re-tighten lug bolts/lug nuts often. When first installed lug bolts/lug nuts should be checked and re-tightened after 5, 15, 25, 50 and 100 miles and continue rechecking for the next few hundred miles of driving.**

**If you discover any loose lug bolts/lug nuts, retighten and check again after 5, 15, 25, 50 and 100 miles and continue rechecking for the next few hundred miles of driving.**

**DISCLAIMERS:**

Failure to carefully follow the installation instructions for your JAMES BARONE RACING product could result in significant property damage, personal injury, injury to others or even death. Please take the time to read and thoroughly understand the instructions prior to installation. The instructions are as accurate as possible and may vary slightly from model year to model year. Professional installation is recommended.

Neither JAMES BARONE RACING nor any of its employees, officers, directors, or shareholders will accept responsibility for improper use or installation of our products. JAMES BARONE RACING is not responsible for the misuse, incorrect installation, or failure of any product we sell. Under no circumstances, including but not limited to negligence, will JAMES BARONE RACING be liable for special or consequential damages that result from the use or inability to use our products. JAMES BARONE RACING does not assume responsibility for any damage to the user, driver, passenger or vehicle resulting from the operation of a JAMES BARONE RACING product. PLEASE DRIVE RESPONSIBLY.