



## **JBR 2013+ FORD FOCUS *ST/RS* FRONT END LINK INSTALLATION INSTRUCTIONS**

### **Tooling:**

- ✓ Jack
- ✓ Jack Stands
- ✓ 13mm & 17mm wrenchs
- ✓ 3/16 or 5.5mm allen wrench
- ✓ Penetrating oil



### **Included:**

- ✓ 1 Pair of font end links

- ❖ Begin by parking on a smooth level surface with the emergency brake engaged. Jack up the front of the vehicle and position jack stands underneath both sides. Remove both front wheels.



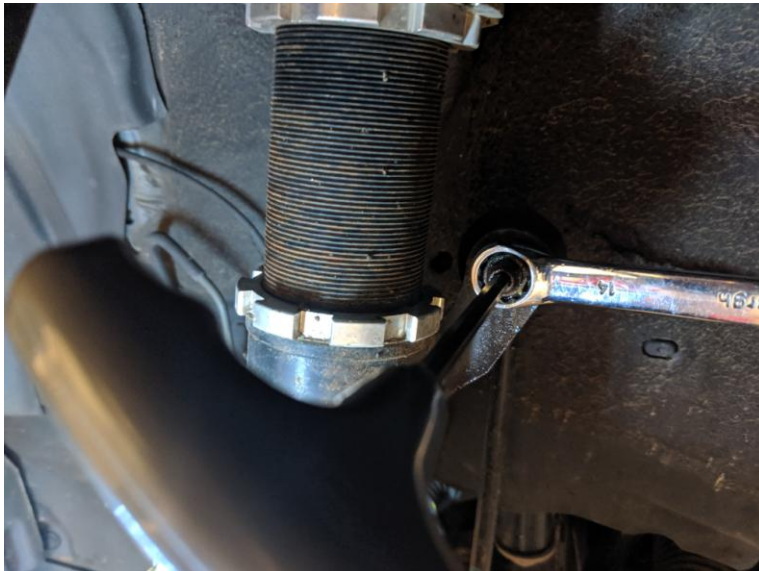
**Refer to you vehicles owner's manual for proper jack placement and supporting procedures.**

**Never get under a vehicle without the proper support in place.**

1. Spray both upper and lower OEM end link mounting nuts with penetrating oil.
2. Using a 13mm wrench and an allen wrench if necessary, remove the nuts securing the bottom of both OEM end links to the sway bar.



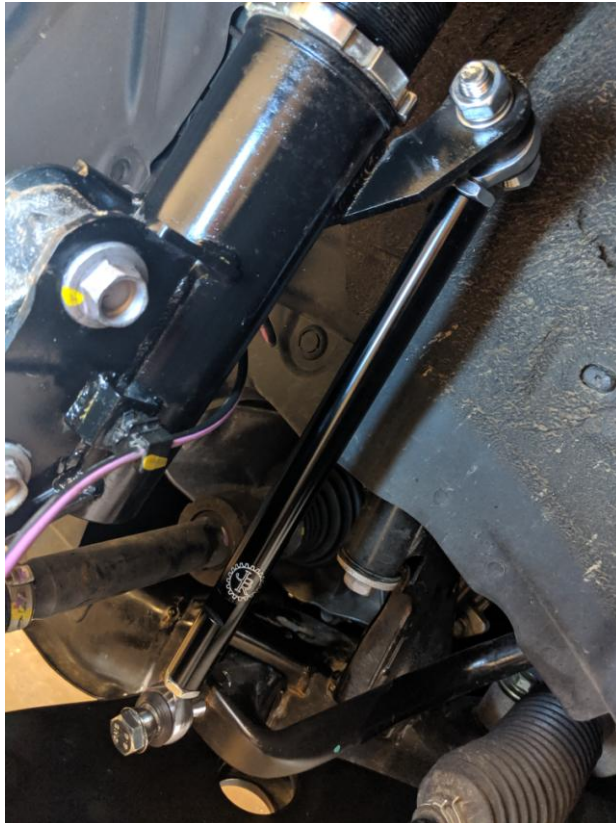
3. Using a 13mm wrench and an allen wrench if necessary, remove the nuts securing the top of both OEM end links to the strut.



4. Disassemble one of end links and thoroughly grease the rod ends using good quality synthetic bearing grease. Failure to thoroughly grease the rod ends will lead to pre-mature failure and void the warranty.



4. Install the upper and lower ends of your new JBR Adjustable Front End Links on to the sway bar and strut then tighten with a 17mm wrench.



5. Adjust the length of the end links as needed and tighten the jam nuts.



**Each rod end must be thoroughly greased at every oil change or pre-mature failure will occur and warranty will be void.**

Copyright © 2019 James Barone Racing LLC. Any unauthorized reproduction or publication of this document is a strictly prohibited without the written consent of James Barone Racing.

**Congratulations!! You've now completed the  
installation of your new JBR Focus *ST*  
Adjustable Rear End Links!!**