



James Barone Racing
Custom Fabrication of Aftermarket Parts and Accessories

JBR MAZDASPEED 3
Small Battery Box Installation Instruction

Tools Required:

Socket wrench
10mm Deep Socket
Socket Extension
10mm wrench
Philips head screw driver

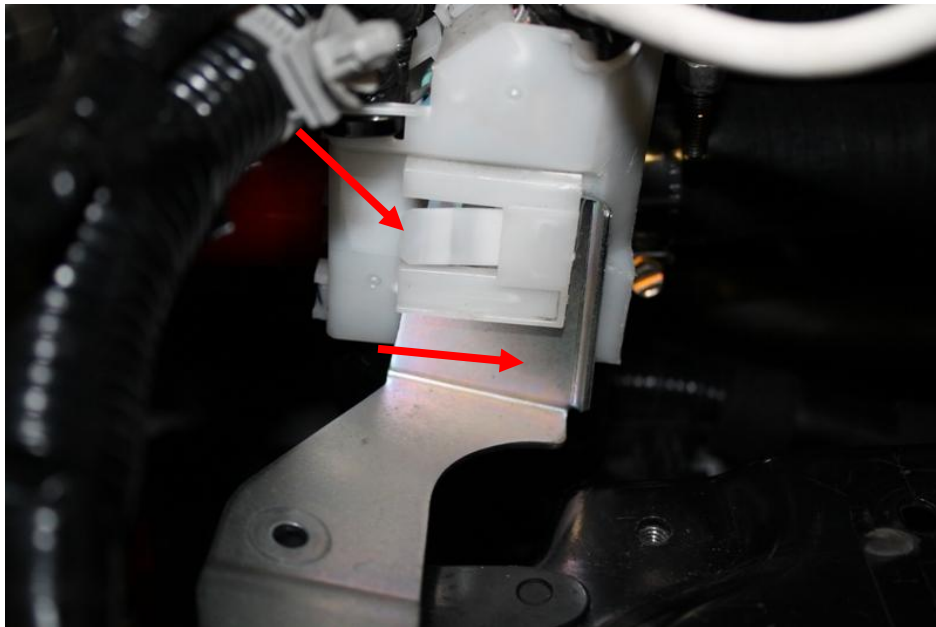
1. Start by removing your factory battery and battery box.
2. Next, using a philips head screw driver remove the ECU cover.



3. With the cover removed, now remove the 4-10mm ECU mounting nuts, remove the ECU from the factory battery box and save the nuts for later use.

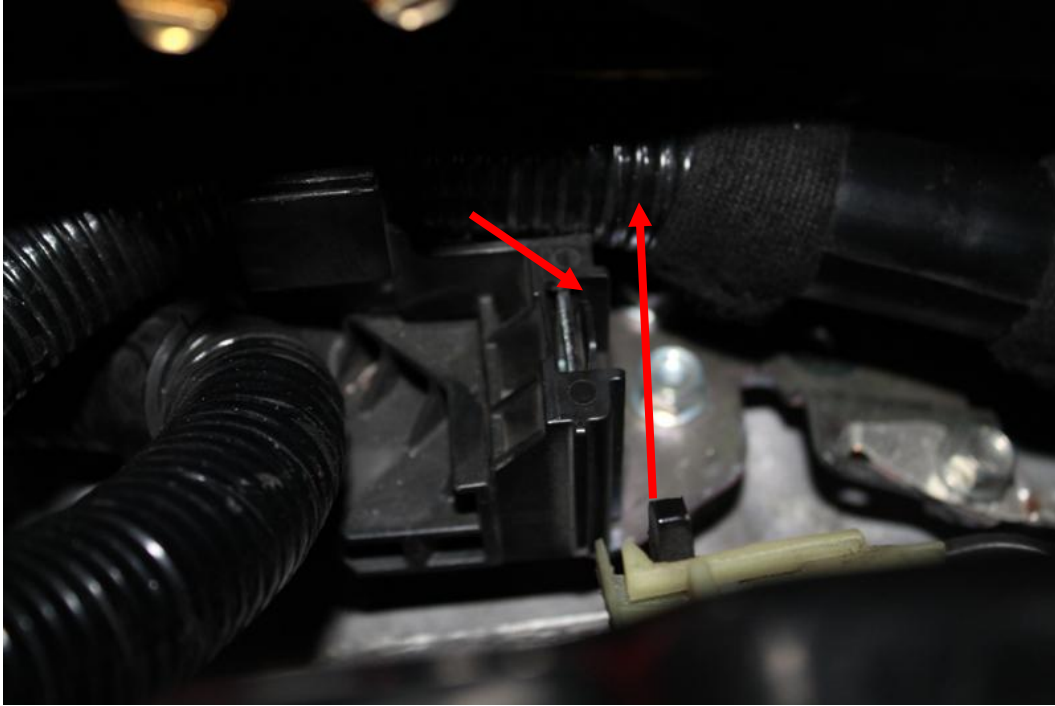


4. Remove the metal ECU wiring harness mounting bracket by pulling the tab shown below towards you and pulling the bracket towards the rear of the car. Remove the bracket from the vehicle.

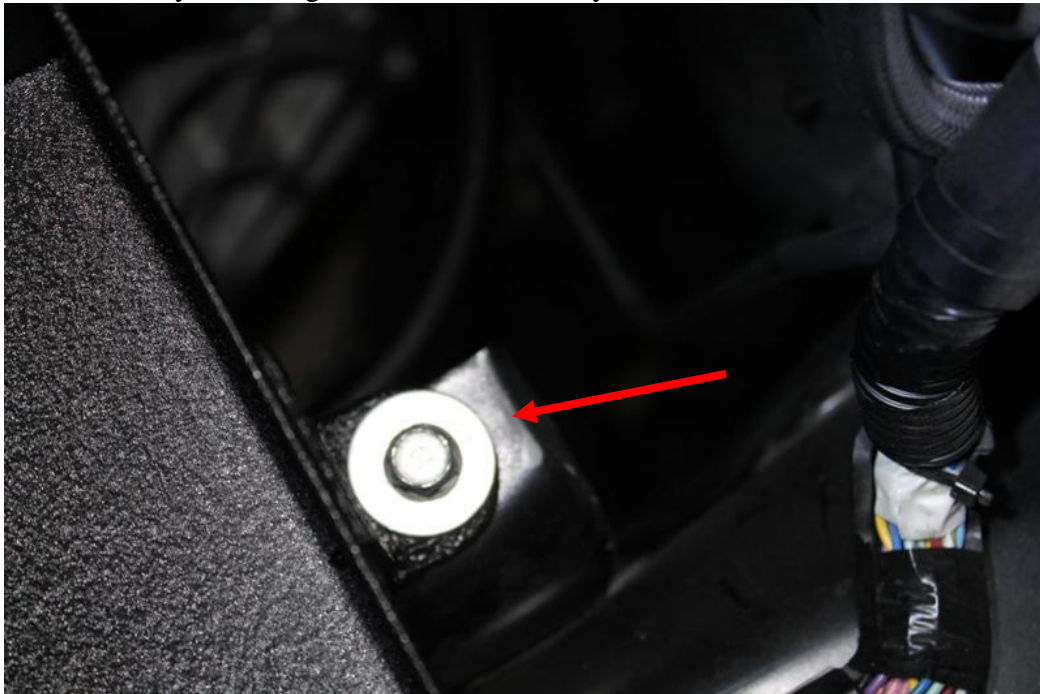


5. Disconnect the ECU wiring harness from the mounting bracket securing it to the transmission. Push the tab shown below towards the rear of the car pull up.

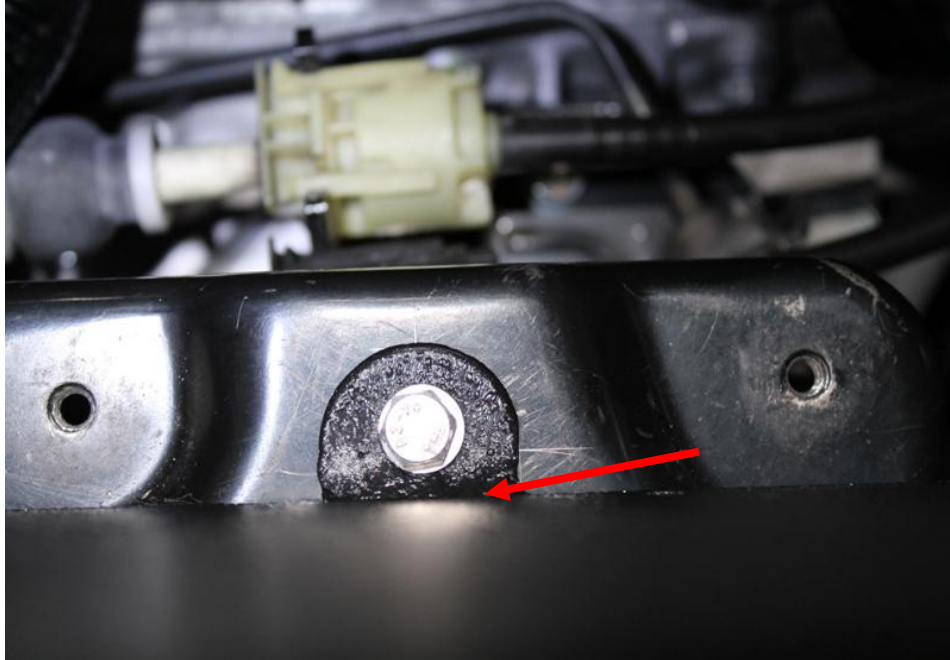
****NOTE**** This needs to be done in order to extend the length of the ECU wiring harness. There is no need to remove the covering from any part of the wiring harness.



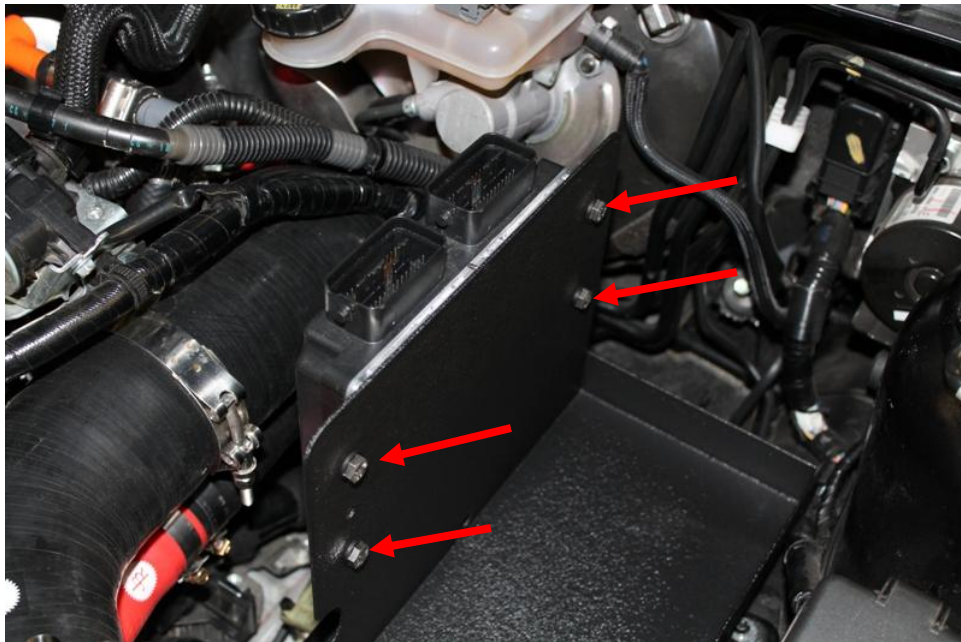
6. Place your new JBR Small Battery Box in to the vehicle. Line up the rear mounting bracket with the rear hole used to mount the factory battery box. Using one factory mounting bolts secure it loosely.



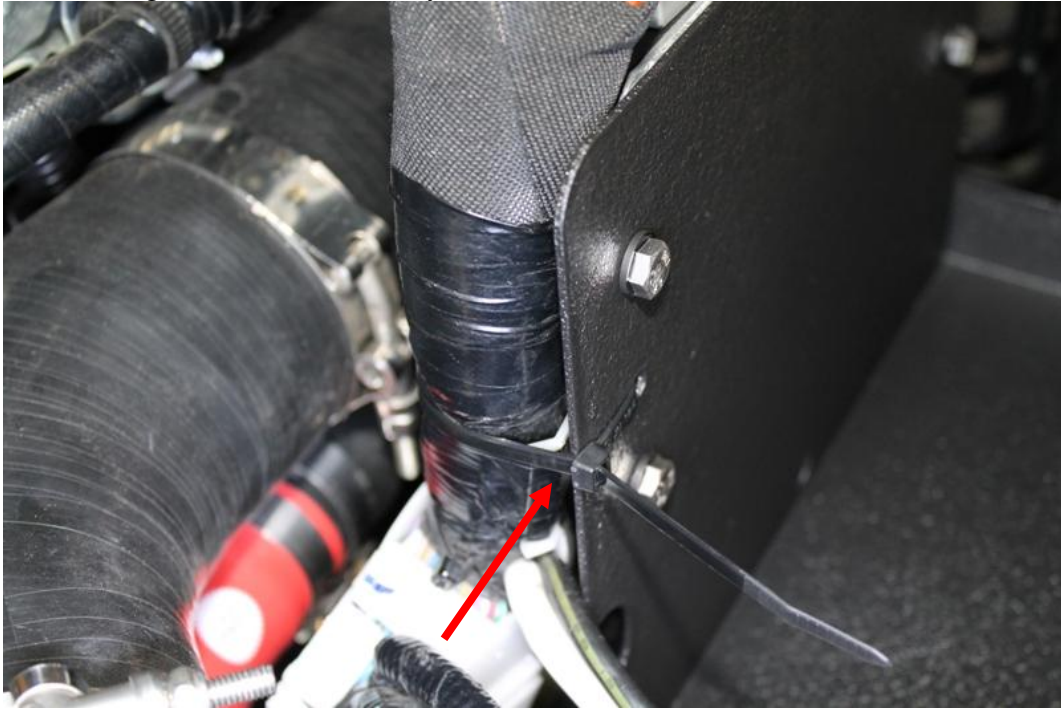
- Using the included stainless bolt, two flat washer and lock nut, secure the passenger side of the battery box and tighten with a 10mm socket and 10mm wrench. Next tighten the rear bolt installed in step 6.



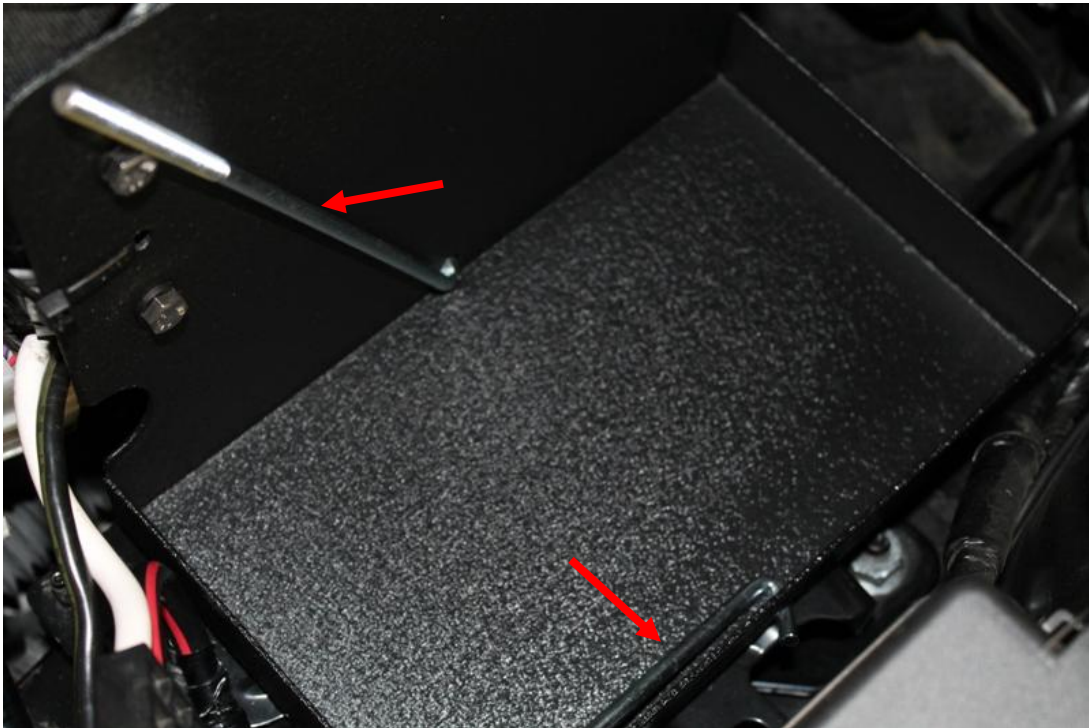
- Next place 1 black nylon washer on each of the remaining 4 bolts include with your kit. Place two of them through the rear ECU mounting holes on the battery box and hold them in place with 2 fingers. Put two more black nylon washers on the bolts, and then put the ECU on to the two rear bolts. Use 2 of nuts removed in step 3 and loosely secure the ECU. Repeat for the front two mounting holes and then tighten all four with a 10mm socket and 10mm wrench.



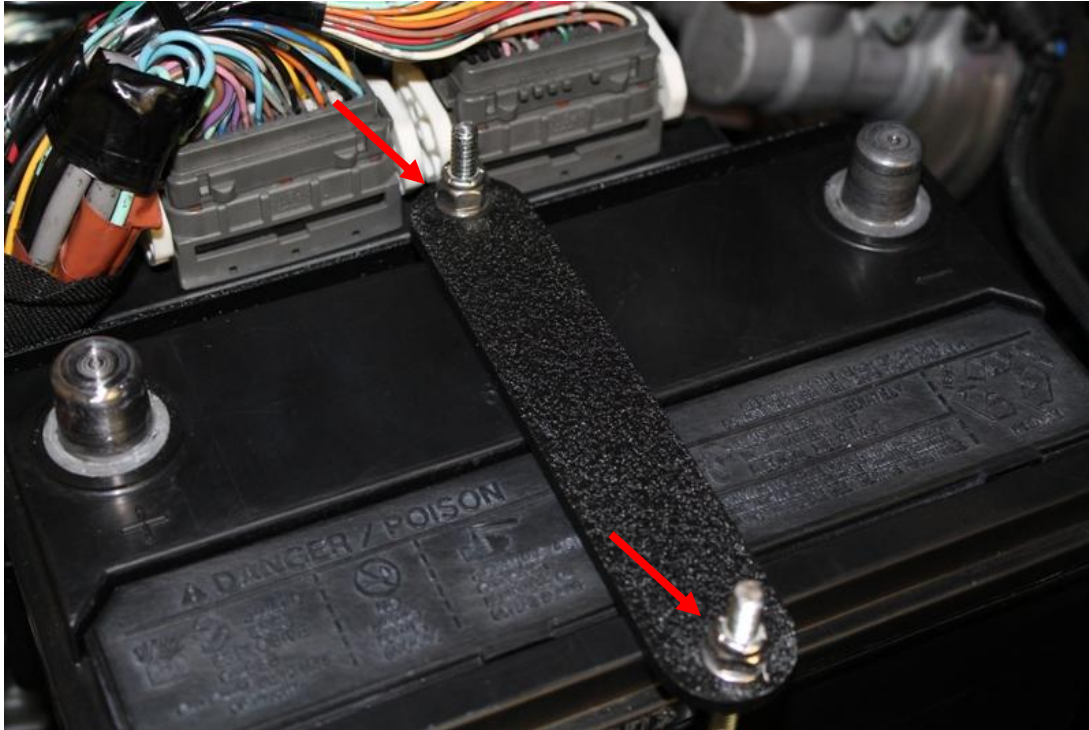
7. Reconnect the harness to the ECU and use the included zip tie to secure the wiring harness to the battery box.



8. Next place the battery hold down hooks in the battery box just like shown below.

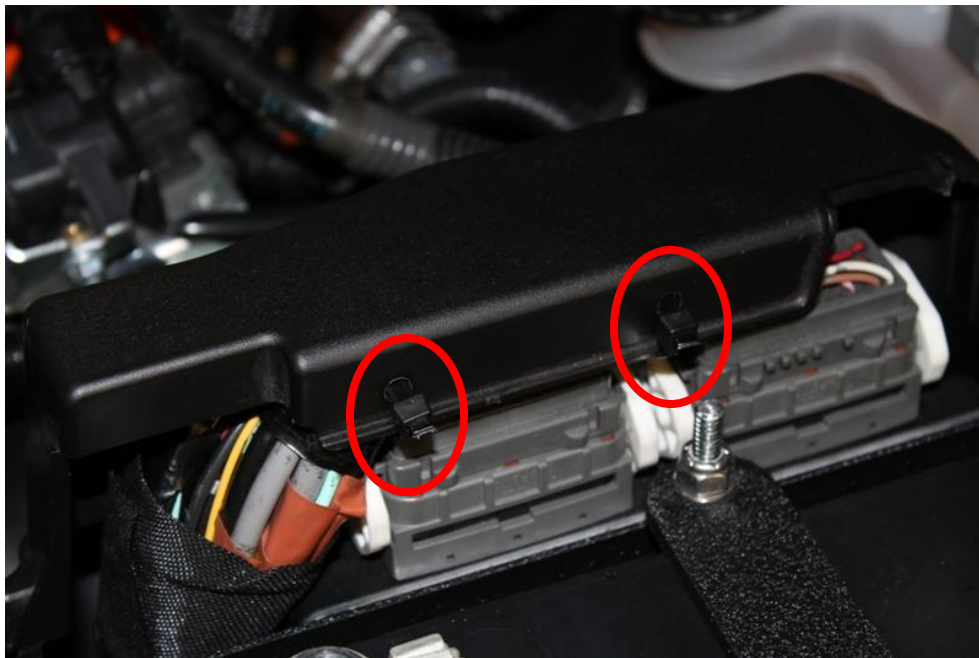


- Place your 51R battery in to the tray, put the hold down hooks through the holes in the hold down bar and secure each hook with a flat washer and a lock nut. Then tighten down the bar with a 10mm deep socket. Now, reconnect the positive battery terminal first then the negative terminal.



OPTIONAL STEP

- Drill a couple of holes in the ECU wiring harness cover as shown and use the included zip ties to secure the cover directly to the wiring harness for a nice finished look.



**Congratulations you've just completed the installation of your new
JBR Small Battery Box!!**

**Now you have plenty of room to install a new JBR Wide Path Full
Intake System**

SHIPPING

All orders are carefully inspected and packaged prior to shipment. The recipient must inspect all shipments for damage and report any damage to the carrier and JAMES BARONE RACING immediately. JAMES BARONE RACING is not responsible for damage that occurs during shipping.

RETURNS:

All sales are final. JAMES BARONE RACING will only except returns in the event of a manufacturer's defect. Defective items will be exchanged for the identical item or repaired at our discretion. Return shipping costs are the responsibility of the purchaser. An RMA # (Return to Manufacturer Authorization Number) Must accompany all returns. In rare cases where a return is accepted a 15% restocking fee will be deducted from the refund or credit. Shipping charges are non- refundable. No returns or exchanges will be accepted after 30 days.

DISCLAIMERS:

Failure to carefully follow the installation instructions for your JAMES BARONE RACING product could result in significant property damage, personal injury, injury to others or even death. Please take the time to read and thoroughly understand the instructions prior to installation. The instructions are as accurate as possible and may vary slightly from model year to model year. Professional installation is recommended. Neither JAMES BARONE RACING nor any of its employees, officers, directors, or shareholders will accept responsibility for improper use or installation of our products. JAMES BARONE RACING is not responsible for the misuse, incorrect installation, or failure of any product we sell. Under no circumstances, including but not limited to negligence, will JAMES BARONE RACING be liable for special or consequential damages that result from the use or inability to use our products. JAMES BARONE RACING does not assume responsibility for any damage to the user, driver, passenger or vehicle resulting from the operation of a JAMES BARONE RACING product. PLEASE DRIVE RESPONSIBLY.

WARRANTY:

All JAMES BARONE RACING products carry a lifetime warranty to the original purchaser. Warranty is non-transferable. Warranty does not cover damage or failure caused by abuse, misuse, faulty installation or repairs not conducted by JAMES BARONE RACING. JAMES BARONE RACING is not liable for consequential damages arising from the use of our products or any indirect damages resulting in the loss of property, revenue or costs for towing, removal, installation, or re-installation. To receive warranty service you must contact JAMES BARONE RACING to receive an RMA # (Return to Manufacturer Authorization Number) at which time you will be provided with instructions for returning the faulty product

CONTACT:

If you have questions or problems, e-mail us at jamesbaroneracing@gmail.com. Posting questions or problems in the forums or other social media outlets will only delay you from getting the correct answer or personalized attention from us.