



**JAMES BARONE RACING**  
**AFTERMARKET PARTS AND ACCESSORIES**

**JBR 2004 – 2013 Mazda 3 & Mazdaspeed 3**  
**Adjustable Rear Camber Arm Installation Instructions**

**Tooling:**

- Jack and jack stands
- Ratchet wrench
- 17mm socket
- 17mm ratcheting wrench (Optional)
- Large adjustable wrench
- Bearing grease

**Parts List**

- 1 pair of JBR Adjustable Rear Camber Arms
- 8 Spacers

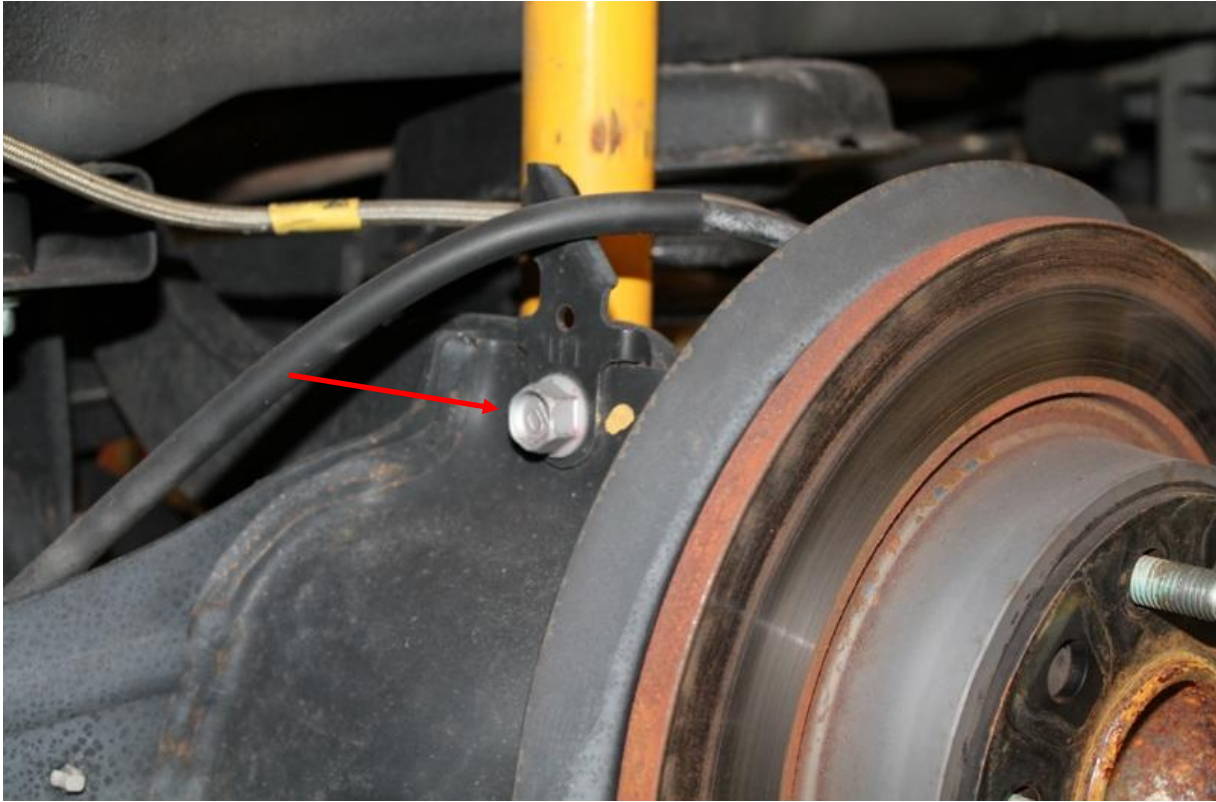
## Driver's side and Passenger Side Removal and Installation

1. Begin by parking on a smooth level surface with the emergency brake engaged. Jack up the rear of the vehicle and position jack stands underneath. Remove both rear wheels.

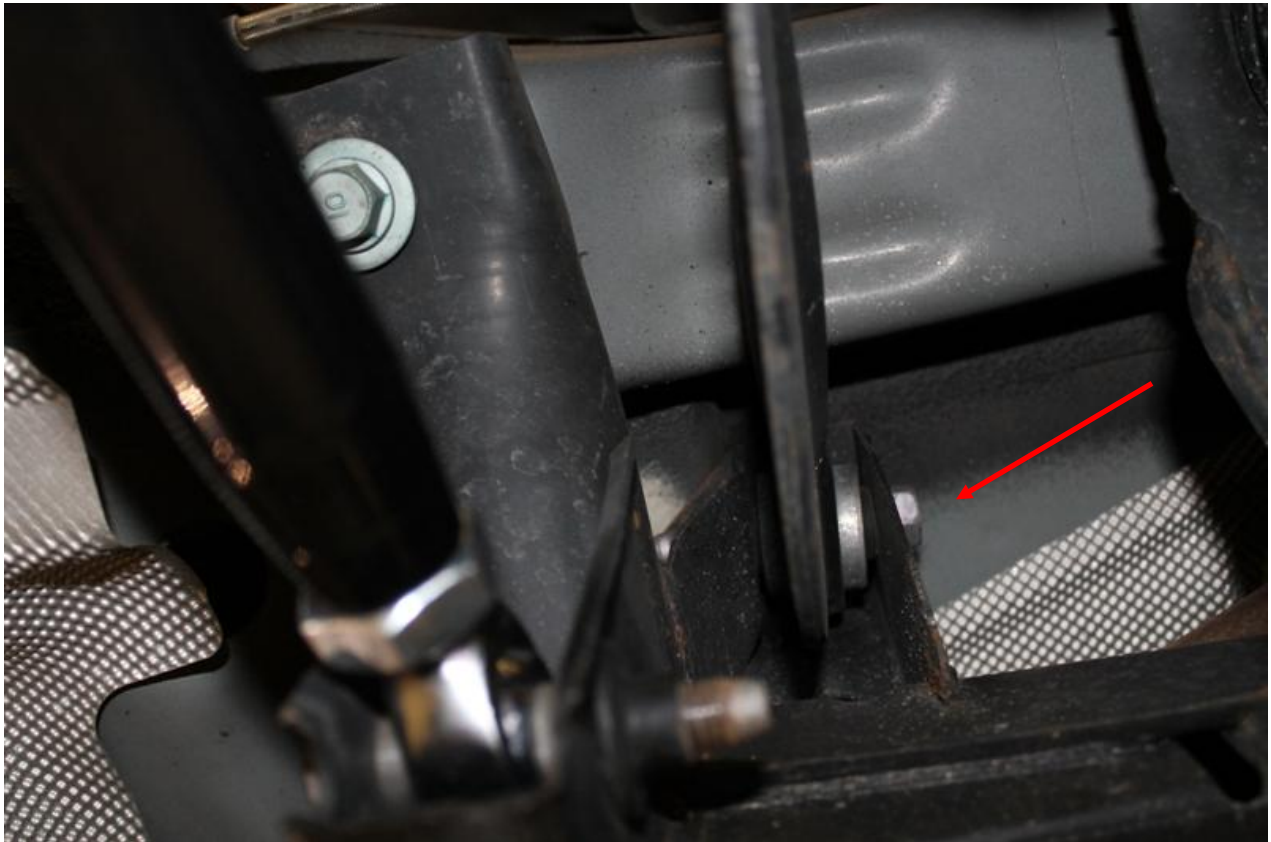


**Refer to you vehicles owner's manual for proper jack placement and supporting procedures. Never get under a vehicle without the proper support in place.**

2. Using a 17mm socket or 17mm ratcheting wrench, remove the bolt closest to the wheel that secures the OEM camber arm.



3. Using a 17mm socket or 17mm ratcheting wrench remove the bolt securing the inner end of the OEM camber arm.
  - Some vehicles will have a silver bracket in the way of removing inner bolt on the passenger side. This bracket can be carefully bent out of the way to remove and reinstall the bolt.



4. Lay the factory arm on the floor just as it was in the car. Adjust your new JBR camber arm to match the length of the OEM camber arm. Lay it on top of the OEM arm and compare the two. Using the bolts you removed in steps 2 & 3, slip them through both camber arms to ensure they arms are exactly the same length. Lock the camber arm in place by tightening the jamb nut tight to the arm using an adjustable wrench.



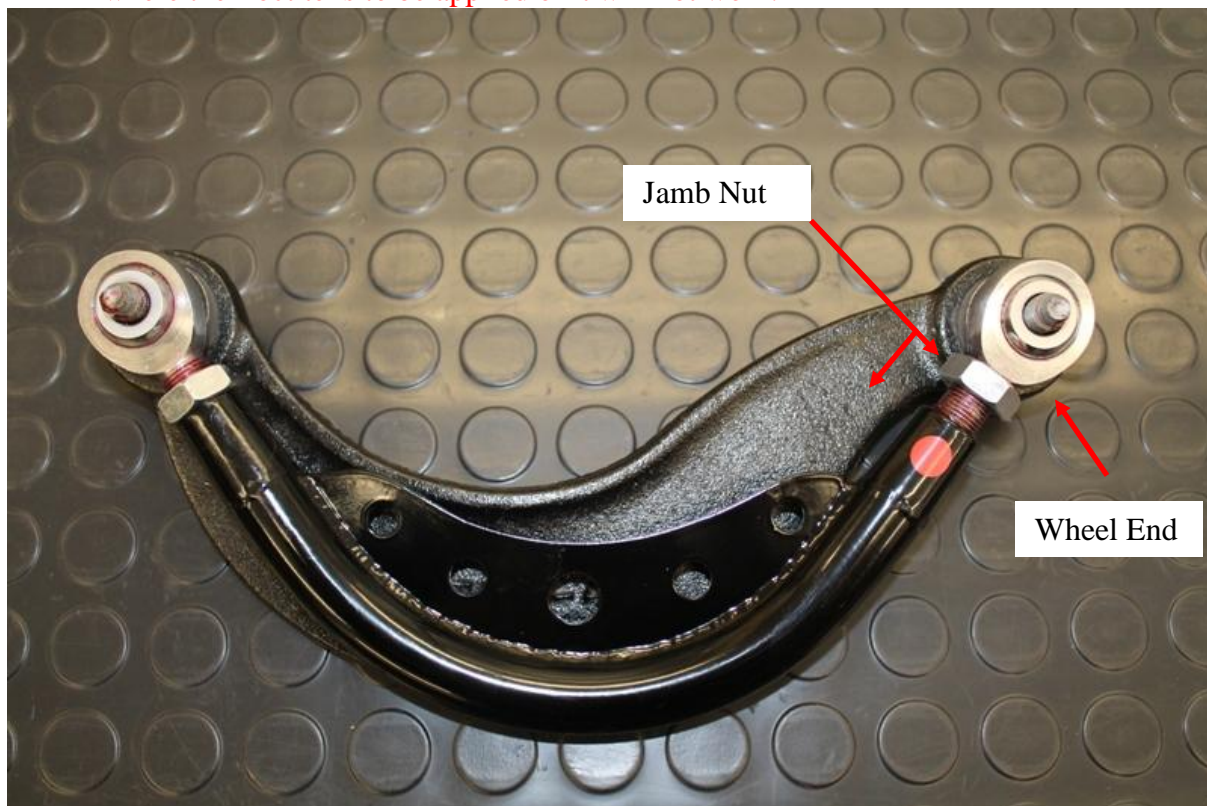
The round dot on your new JBR camber arm indicates the end that **MUST** be located by the wheel. This is the end to adjust. The other end has been locked during assembly and is **NOT** to be adjusted.



There must be a minimum of  $\frac{3}{4}$ " of thread **inside** the arm. Do not extend the adjustment beyond  $\frac{3}{4}$ "

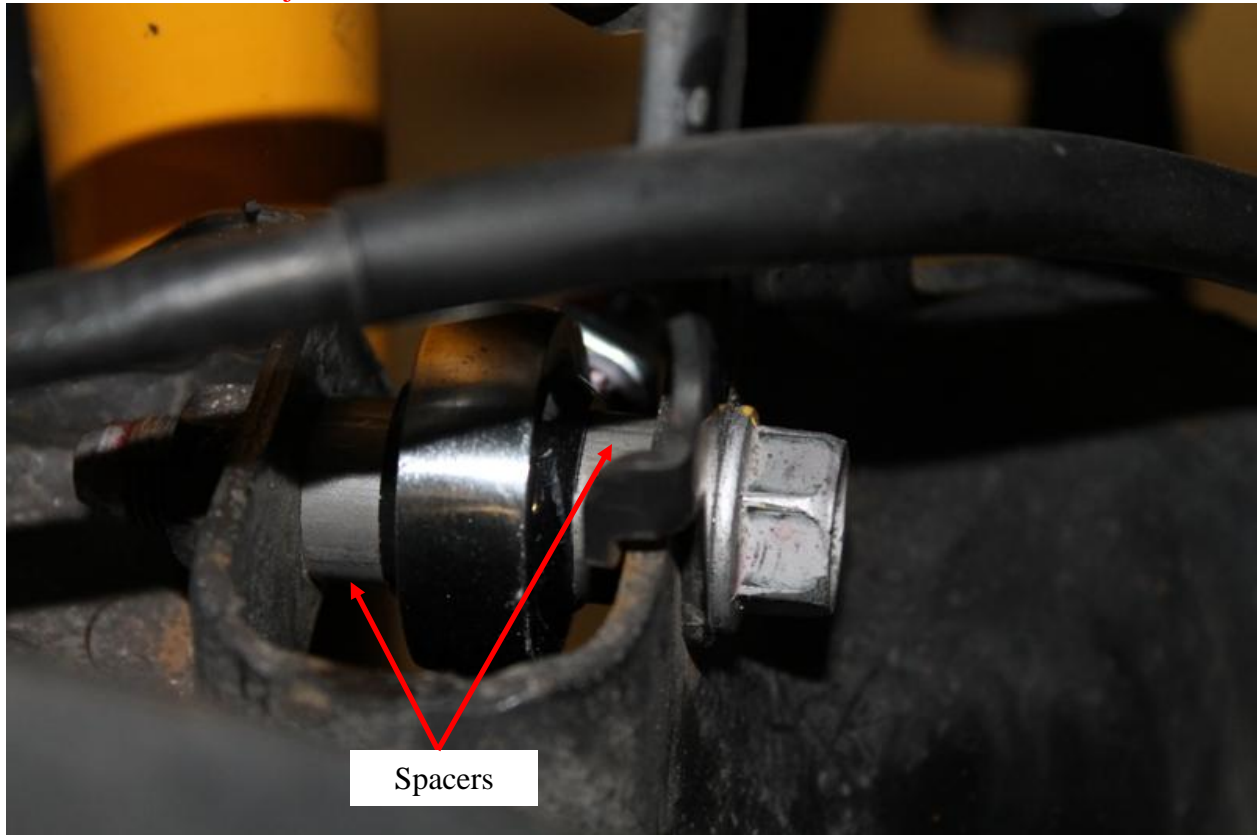


It is strongly recommended that Red Loctite is used to secure the jamb nut after the adjustment has been completed. Thoroughly clean any grease from the area where the Loctite is to be applied or it will not work.



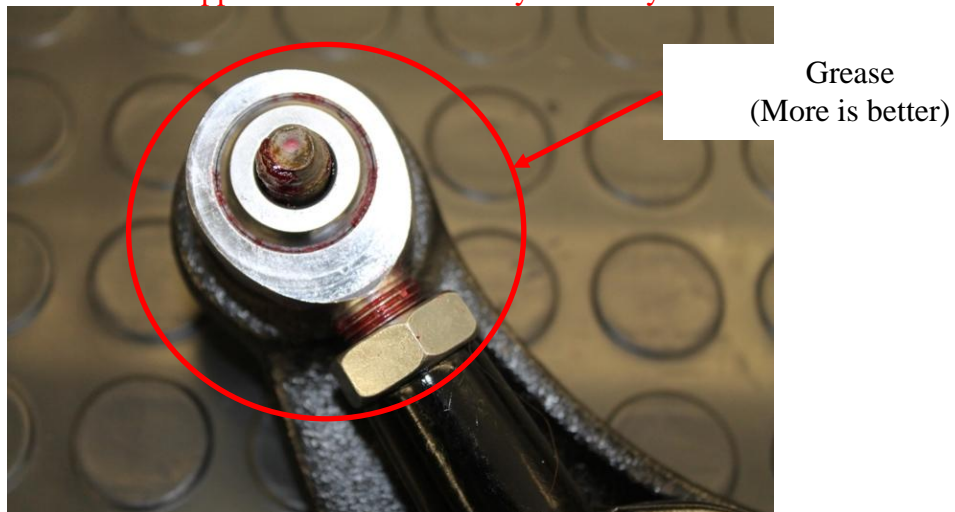
5. Install your new JBR camber arm back in the car using 4 of the spacers provided. Locate one spacer on each side of the rod end for both the inner and outer ends of the camber arm. Tighten to 55-75ft/lbs.

➤ The adjustable end must be installed towards the wheel.



6. Now that the arms have been installed, both ends must be thoroughly covered in grease on both sides of the rod end, threads and nut. Failure to properly grease both sides of all ends after initial installation and at every oil change will cause premature wear and may void the warranty.

➤ Grease should be applied more often in salty and dusty conditions.





It's strongly recommended to check the installation after 500 miles. It's important to make sure that all jamb nuts are tight and all OEM hardware is torques to spec.



An alignment should performed by a qualified shop to avoid improper tire where.

## Congratulations!

# You've now completed the installation of your new JBR adjustable Rear Camber Arms

### **SHIPPING**

All orders are carefully inspected and packaged prior to shipment. The recipient must inspect all shipments for damage and report any damage to the carrier and JAMES BARONE RACING immediately. JAMES BARONE RACING is not responsible for damage that occurs during shipping.

### **RETURNS:**

All sales are final. JAMES BARONE RACING will only except returns in the event of a manufacturer's defect. Defective items will be exchanged for the identical item or repaired at our discretion. Return shipping costs are the responsibility of the purchaser. An RMA # (Return to Manufacturer Authorization Number) Must accompany all returns. In rare cases where a return is accepted a 20% restocking fee will be deducted from the refund or credit. Shipping charges are non- refundable. No returns or exchanges will be accepted after 30 days.

### **DISCLAIMERS:**

Failure to carefully follow the installation instructions for your JAMES BARONE RACING product could result in significant property damage, personal injury, injury to others or even death. Please take the time to read and thoroughly understand the instructions prior to installation. The instructions are as accurate as possible and may vary slightly from model year to model year. Professional installation is recommended.

Neither JAMES BARONE RACING nor any of its employees, officers, directors, or shareholders will accept responsibility for improper use or installation of our products. JAME BARONE RACING is not responsible for the misuse, incorrect installation, or failure of any product we sell. Under no circumstances, including but not limited to negligence, will JAMES BARONE RACING be liable for special or consequential damages that result from the use or inability to use our products. JAMES BARONE RACING does not assume responsibility for any damage to the user, driver, passenger or vehicle resulting from the operation of a JAMES BARONE RACING product. PLEASE DRIVE RESPONSIBLY.

### **WARRANTY:**

All JAMES BARONE RACING products carry a lifetime warranty to the original purchaser. Warranty is non-transferable. Warranty does not cover damage or failure caused by abuse, misuse, faulty installation or repairs not conducted by JAMES BARONE RACING. JAMES BARONE RACING is not liable for consequential damages arising from the use of our products or any indirect damages resulting in the loss of property, revenue or costs for towing, removal, installation, or re-installation. To receive warranty service you must contact JAMES BARONE RACING to receive an RMA # (Return to Manufacturer Authorization Number) at which time you will be provided with instructions for returning the faulty product

### **CONTACT:**

If you have questions or problems, e-mail us at [jamesbaroneracing@gmail.com](mailto:jamesbaroneracing@gmail.com). Posting questions or problems in the forums or other social media outlets will only delay you from getting the correct answer or personalized attention from us.

Copyright © 2015 James Barone Racing LLC. Any unauthorized reproduction or publication of this document is a strictly prohibited without the written consent from James Barone Racing.