



JAMES BARONE RACING AFTERMARKET PARTS AND ACCESSORIES

FOCUS *ST* METHANOL INJECTION SPACER INSTALLATION INSTRUCTIONS

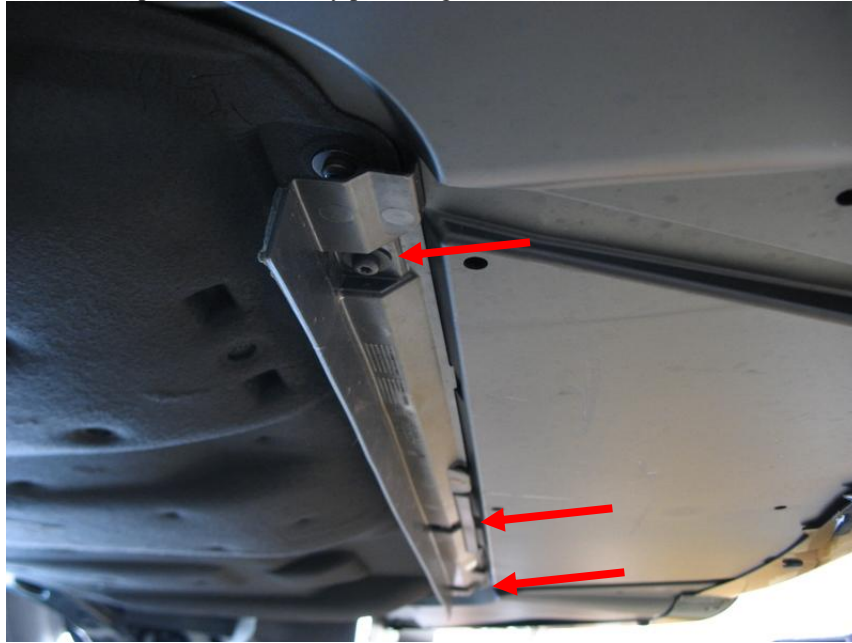
Tooling:

- Socket wrench
- 12" Socket extension
- 8mm Socket
- T-30 torx bit
- 5mm and 3/16" allen wrench or allen sockets
- Long flat head screw driver

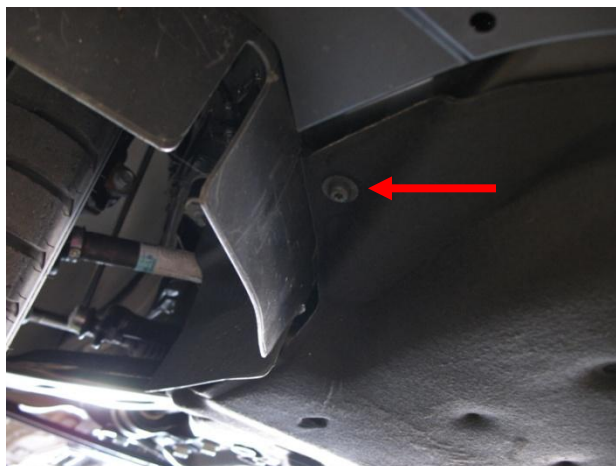
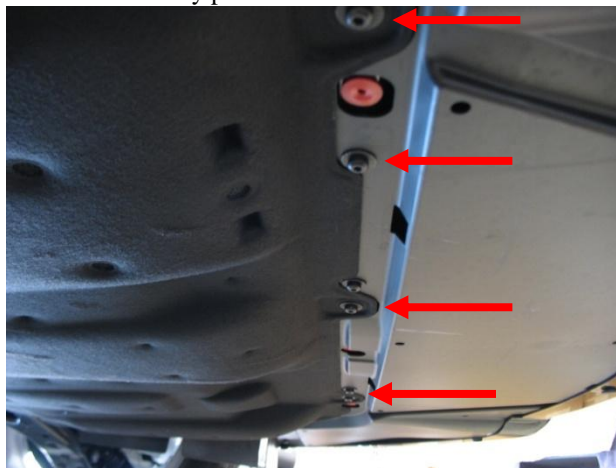
Parts List

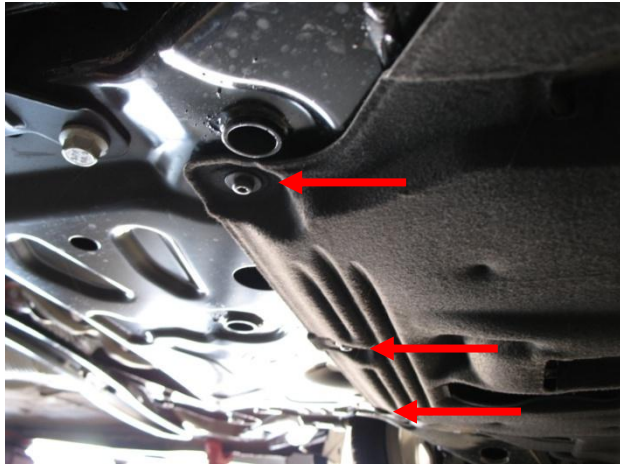
- 1, Meth injection spacer
- 4, 6mm.1.0 x 60mm socket cap bolts
- 4, 6mm flat washers
- 4, 1/8" NPT Plugs
- 1, Thermal insulating throttle body gasket

1. Remove the front portion of the belly pan using a T-30 torx bit.



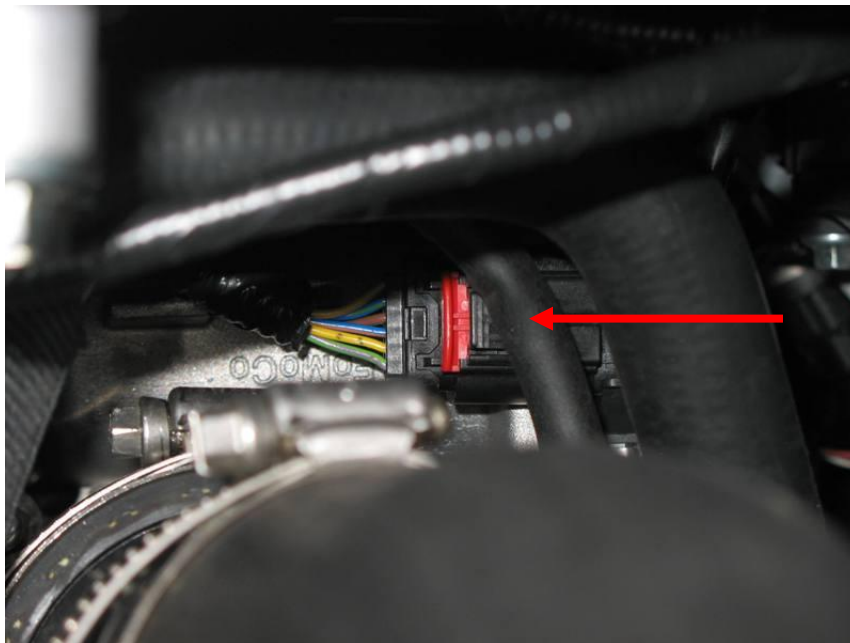
2. Remove the remainder of the belly pan.





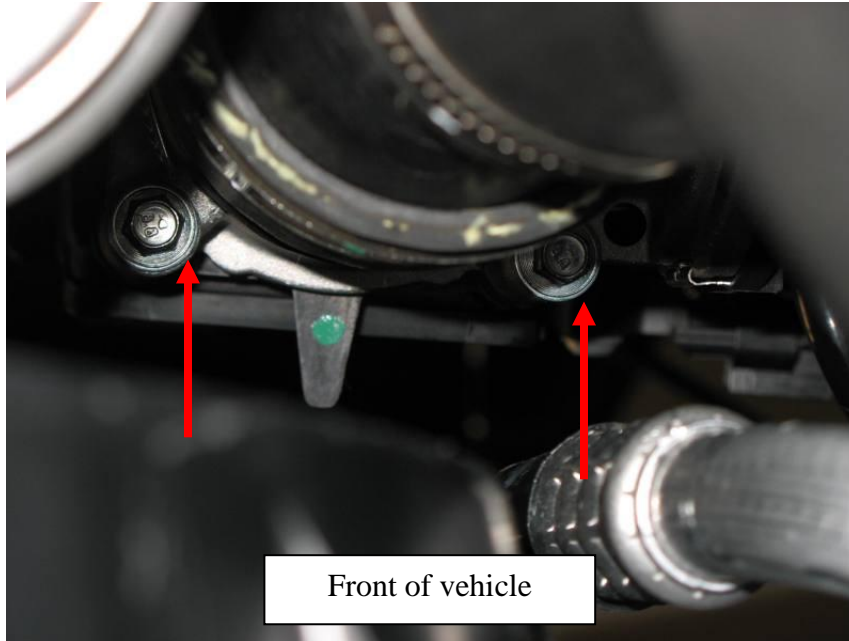
3. Unplug the connector going to the throttle body by sliding the red clip, using a long flat head screwdriver, towards the driver's side of the vehicle. Then pull the connector off carefully in the same direction.

Driver's Side

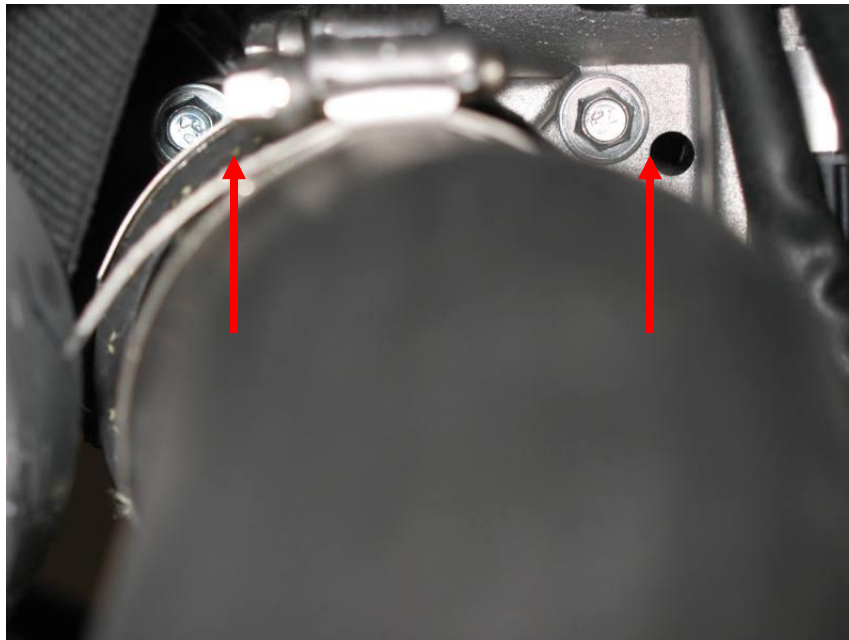


Passenger Side

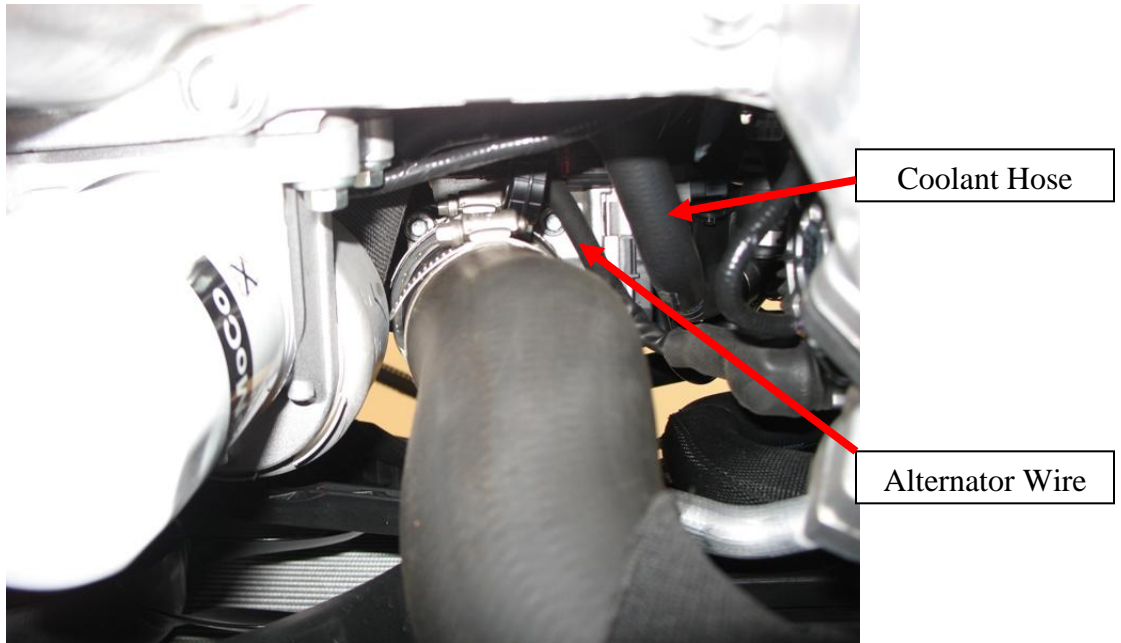
- Using an 8mm socket and 12" extension, remove the front 2 bolts securing the throttle body to the intake manifold.



- Using an 8mm socket and 12" extension, remove the rear 2 bolts securing the throttle body to the intake manifold.



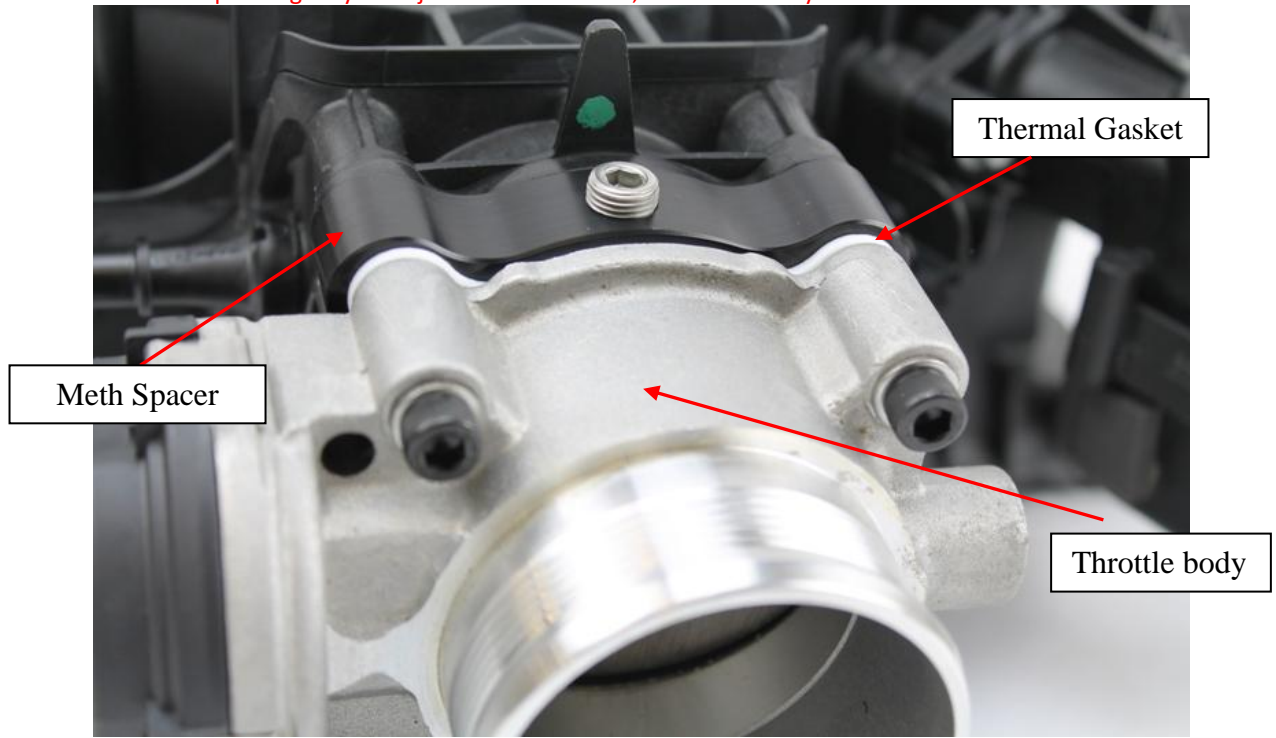
- Carefully pull down on the intercooler hose to remove the throttle body. Moving the positive wire to the alternator and the coolant hose out from under the throttle body will be necessary for it to come out.



- Put some Teflon tape or thread sealant on to all the plugs you plan to install in to your spacer and tighten with a 3/16" allen wrench or allen socket.



8. Place 4 flat washers on to the 4, 60mm bolts included with your kit. Slip all 4 bolts through the throttle body. Add the thermal insulating gasket included with your kit. Then add your new JBR Methanol Injection Spacer.
 - This is for illustration purposes. It may be necessary to install one bolt at a time when reinstalling the throttle body
 - The spacer can go on any way as can the thermal gasket.
 - Depending on your injector nozzle holder, not all side may be usable.



9. Reinstall the throttle body on to the intake manifold and tighten the 4 bolts using a 5mm allen wrench or allen socket to 8-10ft/lbs.
10. Reconnect the wiring harness to the throttle body.

Congratulations!! This completes the installation of your new JBR Meth Injection Spacer Kit!!

SHIPPING

All orders are carefully inspected and packaged prior to shipment. The recipient must inspect all shipments for damage and report any damage to the carrier and JAMES BARONE RACING immediately. JAMES BARONE RACING is not responsible for damage that occurs during shipping.

RETURNS:

All sales are final. JAMES BARONE RACING will only except returns in the event of a manufacturer's defect. Defective items will be exchanged for the identical item or repaired at our discretion. Return shipping costs are the responsibility of the purchaser. An RMA # (Return to Manufacturer Authorization Number) must accompany all returns. In rare cases when a return is accepted, a 20% restocking fee will be deducted from the refund or credit. Shipping charges are non-refundable. No returns or exchanges will be accepted after 30 days.

DISCLAIMERS:

Failure to carefully follow the installation instructions for your JAMES BARONE RACING product could result in significant property damage, personal injury, injury to others or even death. Please take the time to read and thoroughly understand the instructions prior to installation. The instructions are as accurate as possible and may vary slightly from model year to model year. Professional installation is recommended. Neither JAMES BARONE RACING nor any of its employees, officers, directors, or shareholders will accept responsibility for improper use or installation of our products. JAMES BARONE RACING is not responsible for the misuse, incorrect installation, or failure of any product we sell. Under no circumstances, including but not limited to negligence, will JAMES BARONE RACING be liable for special or consequential damages that result from the use or inability to use our products. JAMES BARONE RACING does not assume responsibility for any damage to the user, driver, passenger or vehicle resulting from the operation of a JAMES BARONE RACING product. PLEASE DRIVE RESPONSIBLY.

WARRANTY:

All JAMES BARONE RACING products carry a lifetime warranty to the original purchaser. Warranty is non-transferable. Supporting components, manufactured by companies other than James Barone Racing, carry the manufacturer's warranty. Warranty does not cover damage to coatings caused by exposure to the elements. Warranty does not cover damage or failure caused by abuse, misuse, faulty installation or repairs not conducted by JAMES BARONE RACING. JAMES BARONE RACING is not liable for consequential damages arising from the use of our products or any indirect damages resulting in the loss of property, revenue or costs for towing, removal, installation, or re-installation. To receive warranty service you must contact JAMES BARONE RACING to receive an RMA # (Return to Manufacturer Authorization Number) at which time you will be provided with instructions for returning the faulty product

CONTACT:

If you have questions or problems, e-mail us at jamesbaroneracing@gmail.com. Posting questions or problems in the forums or other social media outlets will only delay you from getting the correct answer or personalized attention from us.