



JAMES BARONE RACING

**2016+ MAZDA MIATA
TOE TAG LICENSE PLATE
RELOCATION KIT**

Tooling:

- ✓ Socket wrench
- ✓ Torque wrench
- ✓ 10mm & 14mm shallow sockets
- ✓ 22mm deep socket
- ✓ 10mm wrench
- ✓ Loctite (optional)
- ✓ Painters Tape (optional)

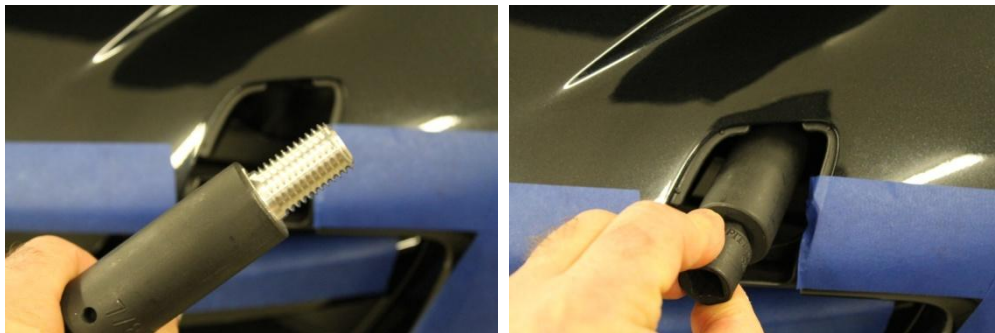
Parts List:

- ✓ Toe Tag License Plate bracket
- ✓ Threaded aluminum adapter
- ✓ 4 6mm bolts
- ✓ 4 6mm lock nuts
- ✓ 8 6mm flat washers
- ✓ 1 3/8 bolt
- ✓ 1 3/8 lock washer
- ✓ 1 5/16" aluminum spacer

1. Begin by preparing the paint surface around the tow hook cover and below the cover with some painters tape to protect against possible contact while performing the installation
2. Using your fingers, carefully remove the tow hook cover.



3. Using a 22mm socket begin threading the aluminum hex bolt in to the bumper and tighten to 60ft/lbs
 - If it's difficult to thread the aluminum hex bolt in to the bumper, stop. Use some WD40 on the threads of the aluminum hex adapter and work it back and forth to remove any rust or paint that may be trapped in the threads of the bumper



4. Slip the license plate bracket up behind the bumper



5. Place the external tooth lock washer on to the 14mm bolt, slip it through the hole in the bracket and add the aluminum spacer. Add a few drops of Loctite to the end of the bolt.



6. Hand tighten the bolt until snug, level and then tighten to 55ft-lbs using a 14mm socket.



7. Using a 10mm socket and 10mm socket wrench, attach your license plate to the Toe Tag using the 4-10mm bolts, 8-flat washers and 4-10mm lock nuts.



**Congratulations!! You've just completed the installation of your
JBR Toe Tag License Plate Relocation Kit!!**

Copyright © 2016 James Barone Racing LLC. Any unauthorized reproduction or publication of this document is a strictly prohibited without the written consent from James Barone Racing.

SHIPPING

All orders are carefully inspected and packaged prior to shipment. The recipient must inspect all shipments for damage and report any damage to the carrier and JAMES BARONE RACING immediately. JAMES BARONE RACING is not responsible for damage that occurs during shipping.

RETURNS:

All sales are final. JAMES BARONE RACING will only accept returns in the event of a manufacturer's defect. Defective items will be exchanged for the identical item or repaired at our discretion. Return shipping costs are the responsibility of the purchaser. An RMA # (Return to Manufacturer Authorization Number) Must accompany all returns. In rare cases where a return is accepted a 20% restocking fee will be deducted from the refund or credit. Shipping charges are non-refundable. No returns or exchanges will be accepted after 30 days.

DISCLAIMERS:

Failure to carefully follow the installation instructions for your JAMES BARONE RACING product could result in significant property damage, personal injury, injury to others or even death. Please take the time to read and thoroughly understand the instructions prior to installation. The instructions are as accurate as possible and may vary slightly from model year to model year. Professional installation is recommended.

Neither JAMES BARONE RACING nor any of its employees, officers, directors, or shareholders will accept responsibility for improper use or installation of our products. JAMES BARONE RACING is not responsible for the misuse, incorrect installation, or failure of any product we sell. Under no circumstances, including but not limited to negligence, will JAMES BARONE RACING be liable for special or consequential damages that result from the use or inability to use our products. JAMES BARONE RACING does not assume responsibility for any damage to the user, driver, passenger or vehicle resulting from the operation of a JAMES BARONE RACING product. PLEASE DRIVE RESPONSIBLY.

WARRANTY:

All JAMES BARONE RACING products carry a lifetime warranty to the original purchaser. Warranty is non-transferable. Warranty does not cover damage or failure caused by abuse, misuse, faulty installation or repairs not conducted by JAMES BARONE RACING. JAMES BARONE RACING is not liable for consequential damages arising from the use of our products or any indirect damages resulting in the loss of property, revenue or costs for towing, removal, installation, or re-installation. To receive warranty service you must contact JAMES BARONE RACING to receive an RMA # (Return to Manufacturer Authorization Number) at which time you will be provided with instructions for returning the faulty product

CONTACT:

If you have questions or problems, e-mail us at jamesbaroneracing@gmail.com. Posting questions or problems in the forums or other social media outlets will only delay you from getting the correct answer or personalized attention from us.